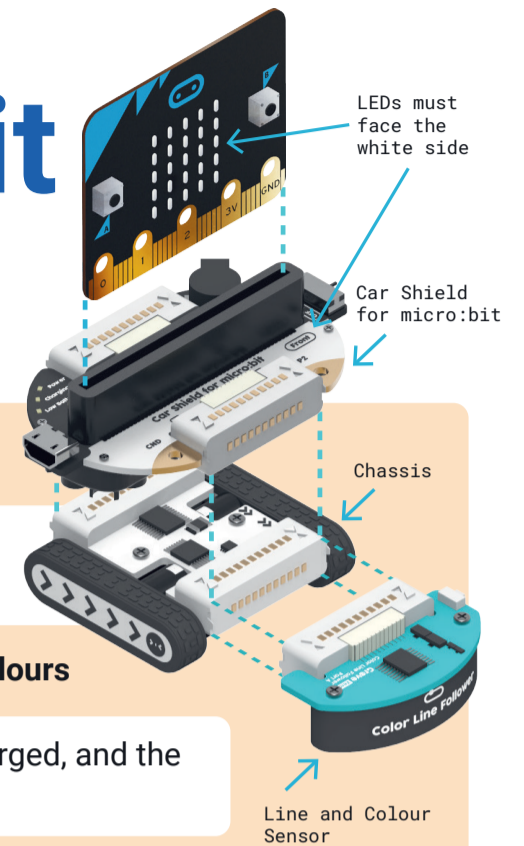


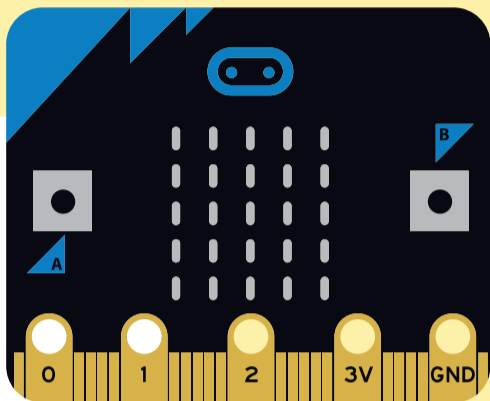
# Debugging your micro:bit



## Micro:bit

### Why can't I open a .hex file?

A .hex file contains code only a micro:bit can read. You need to copy the file into the MICROBIT drive, not open it.



### Which file do I load onto the micro:bit?

It is the file at the top of the downloads list. You can use the timestamp of the file to find the newest version.

### I changed my code but it did the same thing

Make sure you downloaded the correct version.

## Micro:car Hardware

### My car went backwards

Is the chassis facing the right way?

### My micro:car isn't detecting colours

Make sure the car is fully charged, and the room is evenly lit.

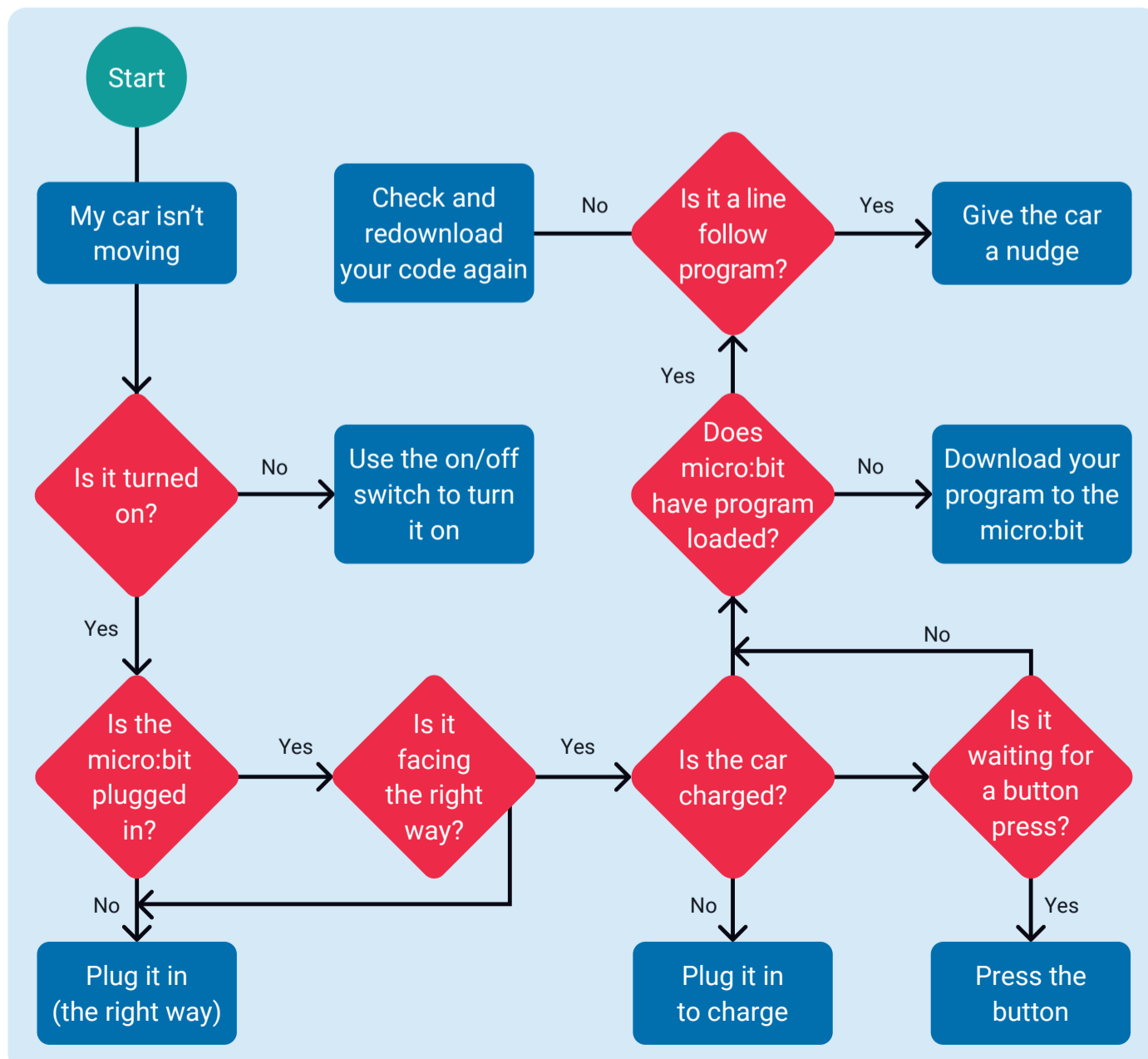
### My car is going around in circles

There could be a problem with one of your car's motors. Is it clogged with something?

### The car should be following a line, but it's not moving

Sometimes it needs a nudge before it starts.

## Why isn't it moving flow chart



## General

### I'm uploading a program to the micro:bit and car, but the car is moving and making weird noises even though it's turned off

The car is getting power through the computer's USB port! Unplug the micro:bit from the car and it'll stop.

### My line follow program loses the line on corners

Are you using left or leftmost? How fast do you move when you go left and right?

### The micro:bit isn't showing up on the computer

Make sure you've plugged the micro:bit in, not the micro:car. Try unplugging it and plugging it back in again.