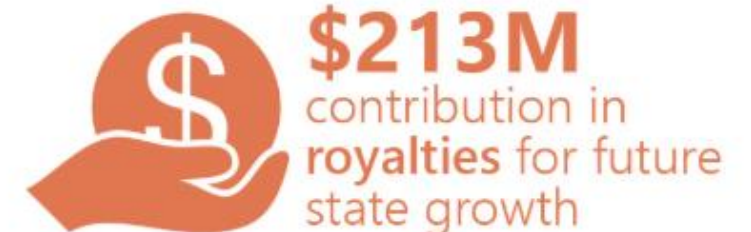

South
Australian
Chamber
Of
Mines &
Energy

Rebecca Knol Chief Executive Officer

Regional Development SA
July 2018

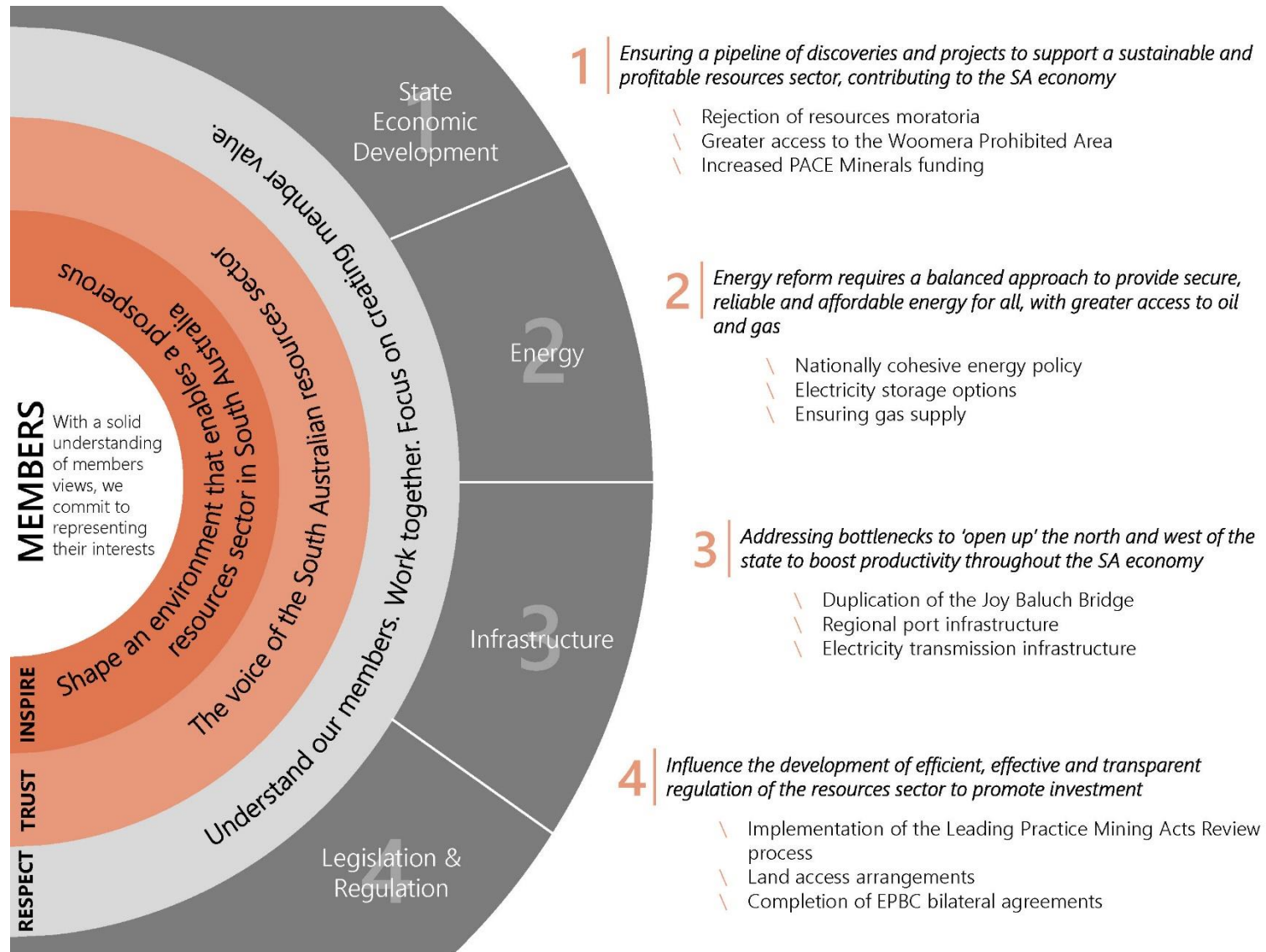
South Australian Overview

SACOME



**All figures represent the mining and petroleum sectors in South Australia
Source: South Australian Resources Information Gateway (SARIG) 2018*

Strategy



Policy Priorities



1

State Economic Development

Ensuring a pipeline of discoveries and projects to support a sustainable and profitable resources industry, contributing to the SA economy

2

Energy

Energy reform requires a balanced approach to provide a secure, reliable and affordable energy for all, with greater access to oil and gas

3

Infrastructure

Addressing bottlenecks to 'open up' the north and west of the State to boost productivity throughout the South Australian economy

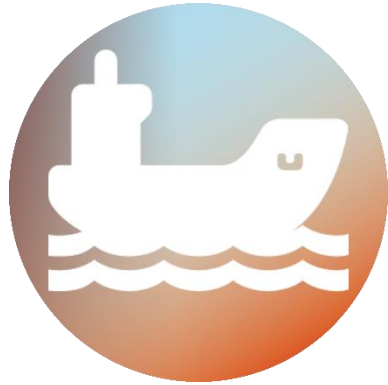
4

Legislation & Regulation

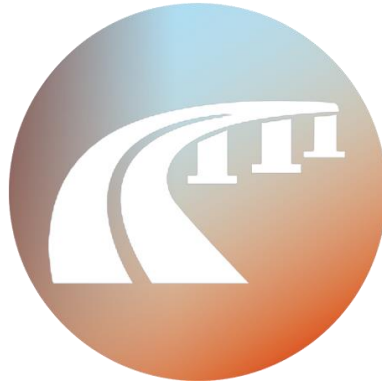
Influence the development of efficient, effective and transparent regulation of the resources industry to promote investment

Infrastructure Priorities

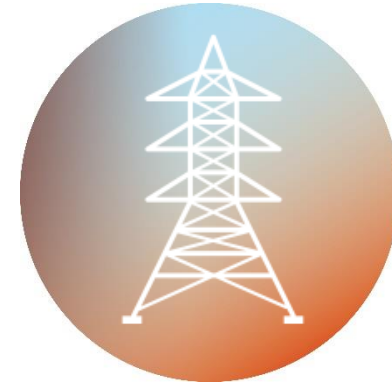
SACOME



Regional
Minerals Port



Duplication of the
Joy Baluch Bridge



Electricity
transmission

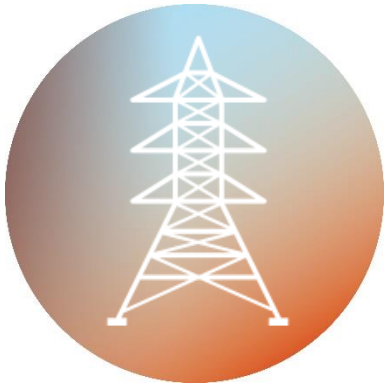


- Enduring export bottleneck for the resources sector
- Requires a comprehensive deep water solution
- Key considerations include:
 - ✓ Open access
 - ✓ Bulk loading
 - ✓ Land-side infrastructure

Joy Baluch Bridge Duplication



- Strategically important infrastructure corridor
- Port Augusta is also at the hub of South Australia's mineral-rich far north and western regions
- creates economic efficiencies for the resources, agricultural and freight sectors
- \$200m funding commitment – State & Commonwealth



- Energy affordability, reliability and security is a significant commercial aspect
- The resources sector is the largest user of electricity in South Australia.
- Far North and the Eyre Peninsula has significant mineral resources and exploration potential
- Cross sectoral benefits

2018-19 Annual Sponsors

SACOME

PREMIER

BHP



PLATINUM



SILVER

FINLAYSONS
LAWYERS



GRAPHITE



COPPER

FYFE

EXACT
CONTRACTING

