
South
Australian
Chamber
Of
Mines &
Energy

Rebecca Knol

Chief Executive Officer

GMUSG Conference & Trade Expo
August 2019

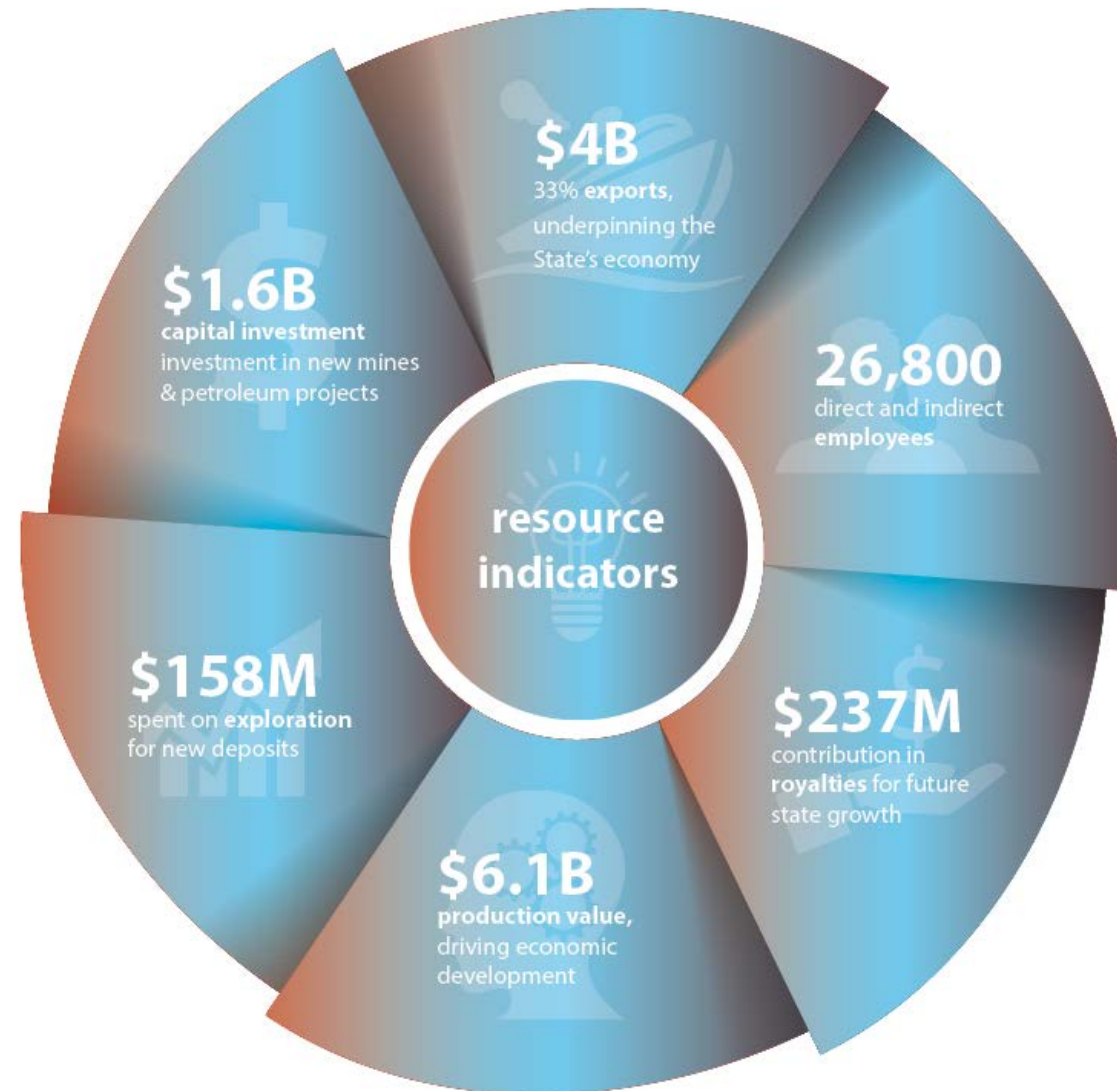
The Upper Spencer Gulf

SACOME



Contribution to the economy

SACOME

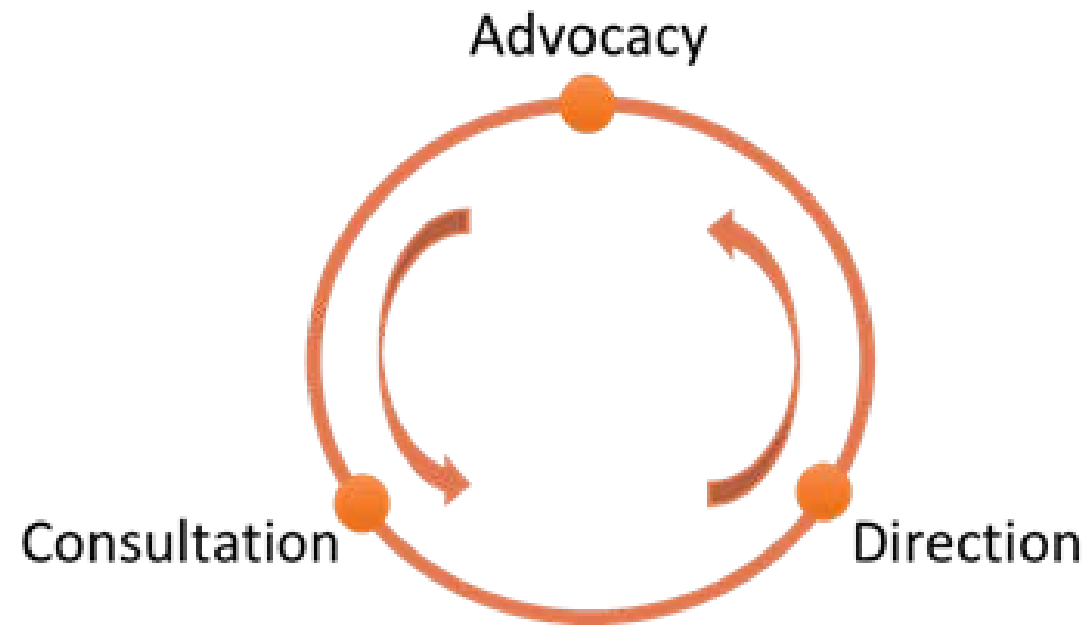


The leading industry body representing
the resources sector in South Australia



SACOME Policy

SACOME



SACOME Committees



Mining & Extractives



Petroleum



Exploration



Energy



Legislation & Regulation



Infrastructure



Economics & Tax



External Affairs

Joy Baluch Bridge Duplication

SACOME



Eyre Peninsula Transmission Line

SACOME



Accelerated Discovery Initiative

SACOME



Joint Electricity Purchasing Group

SACOME



Code of Conduct

SACOME



Infrastructure

SACOME



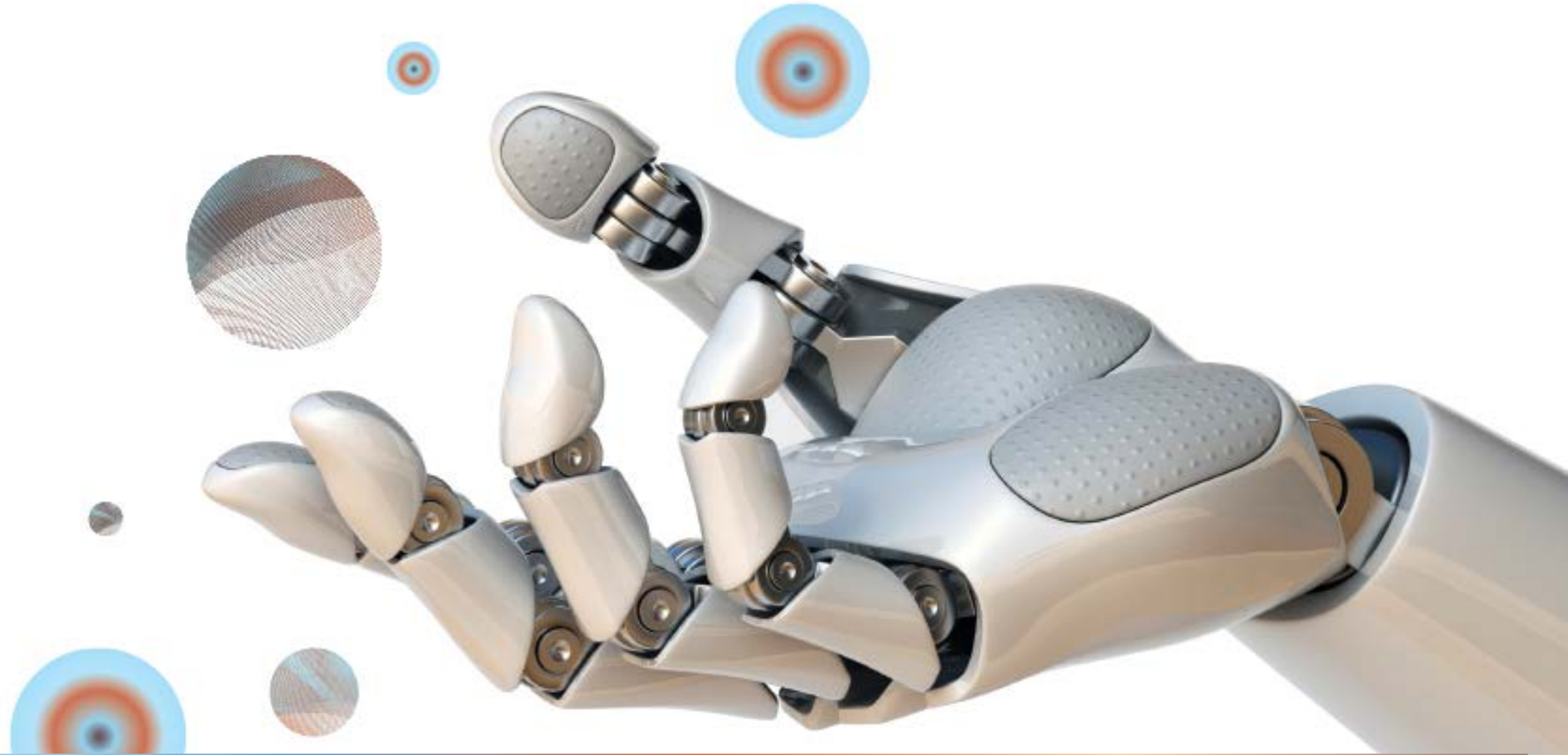
Infrastructure

SACOME



2024 Vision

SACOME



1. Future Industry

SACOME



2. Strong Support

SACOME



3. Sector of Choice

SACOME



4. Recognised Contributor

SACOME



5. Supporting Communities

SACOME



6. Socially & Environmentally Responsible

SACOME



7. Profitable & Resilient

SACOME



Annual Sponsors

SACOME

In 2019-20 the South Australian Chamber of Mines & Energy
is proudly supported by

Premier



Platinum



Silver



Copper



Graphite



South
Australian
Chamber
Of
Mines &
Energy

Rebecca Knol

Chief Executive Officer

GMUSG Conference & Trade Expo
August 2019
