

Rebecca Knol Chief Executive Officer

SAFC Freight 2030 Conference

Tuesday 29 October

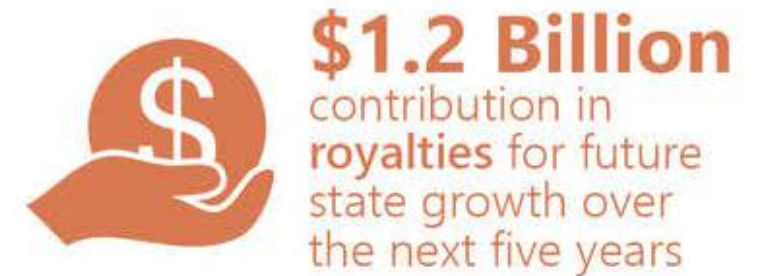
'Short and medium-term wants and needs'

An aerial photograph of a large-scale mining operation. A yellow dump truck is driving on a wide, reddish-brown dirt road that winds through a deep, terraced open-pit mine. The mine's walls show distinct horizontal layers of earth and rock. The lighting is bright, casting long shadows and highlighting the textures of the soil and the ruggedness of the mining site.

The leading industry body
representing the resources
sector in South Australia

South Australian Overview

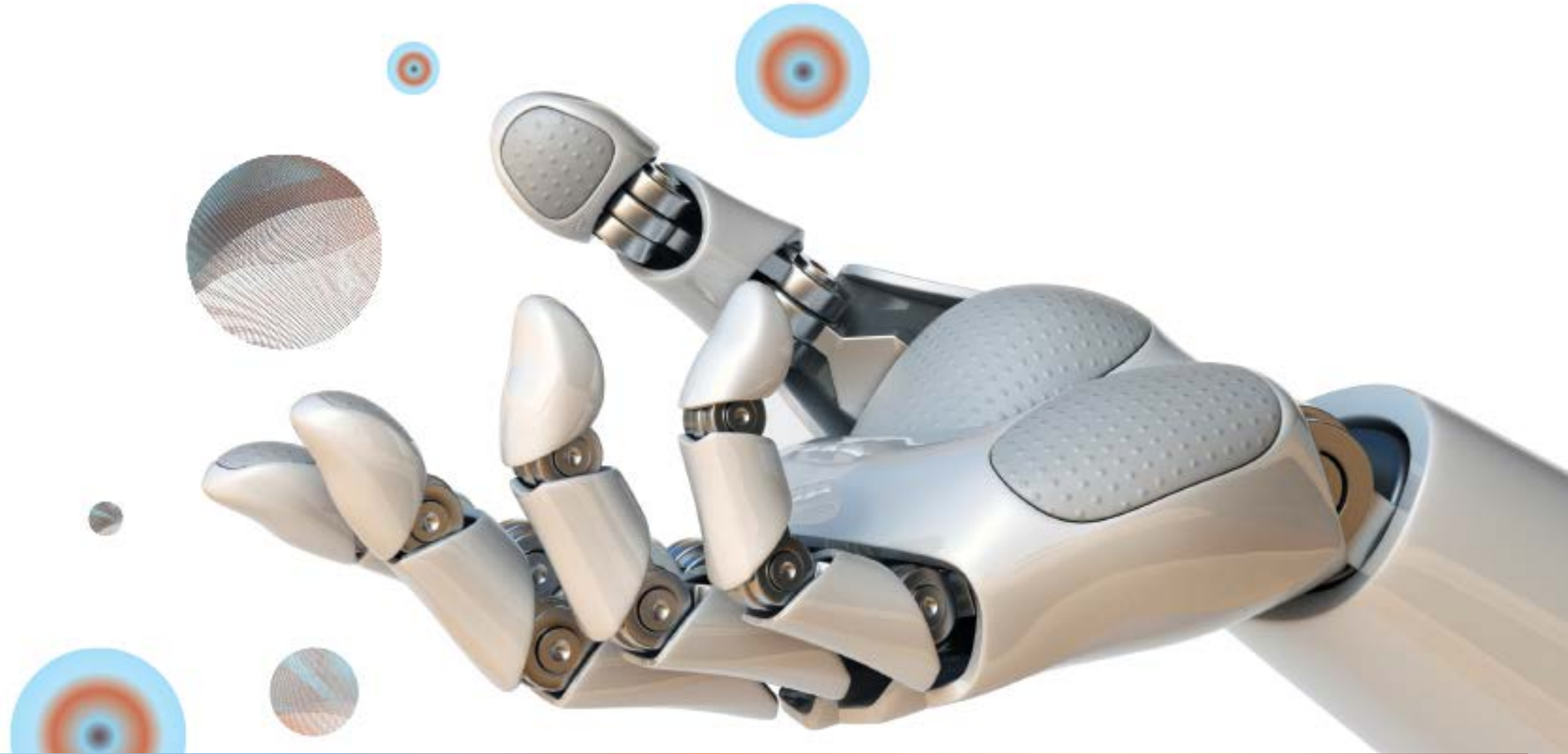
SACOME



**All figures represent the mining and petroleum sectors in South Australia
Source: South Australian Resources Information Gateway (SARIG) 2019*

2024 Vision

SACOME



1. Future Industry

SACOME



2. Strong Support

SACOME



3. Sector of Choice

SACOME



4. Recognised Contributor

SACOME



5. Supporting Communities

SACOME



6. Socially & Environmentally Responsible

SACOME



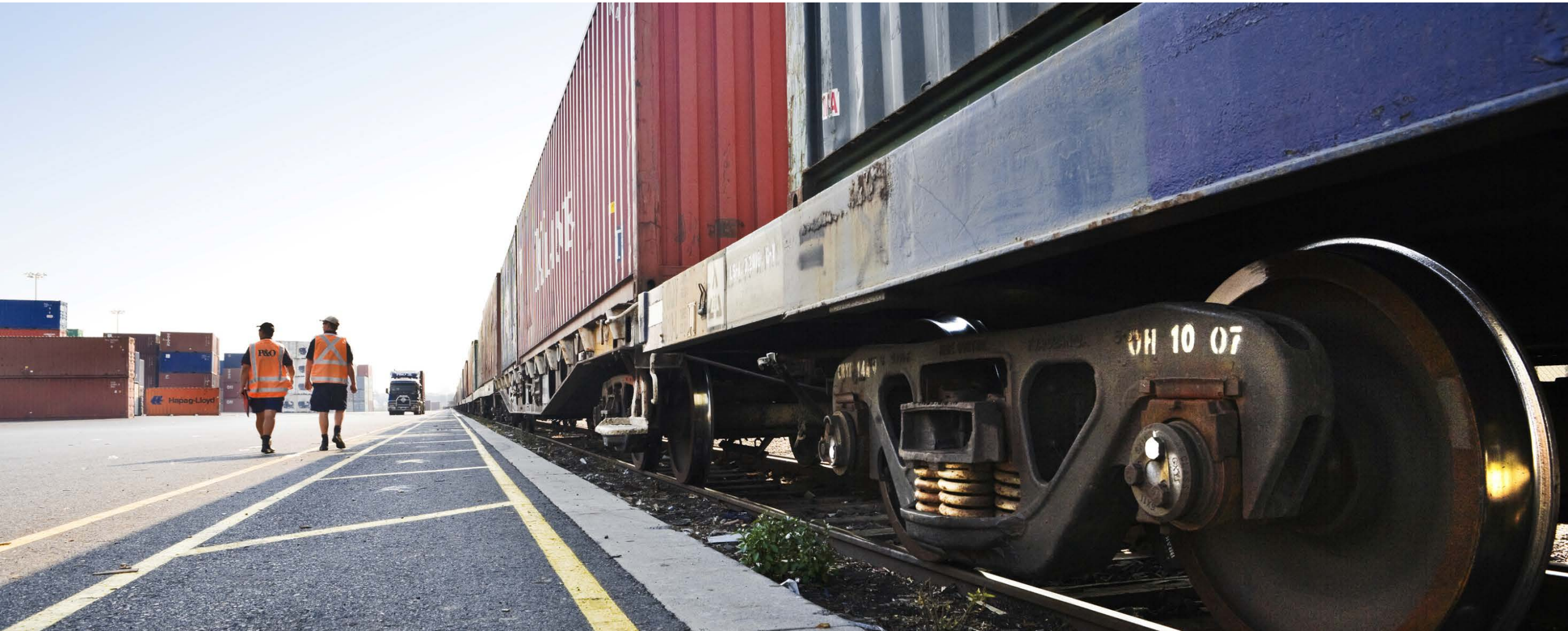
7. Profitable & Resilient

SACOME



Infrastructure and the resources sector

SACOME



New province development

SACOME



Improving regional roads

SACOME



A collaborative approach

SACOME



Joy Baluch Bridge Duplication

SACOME



Conclusion

SACOME



Annual Sponsors

SACOME

In 2019-20 the South Australian Chamber of Mines & Energy
is proudly supported by

Premier



Platinum



Silver



Copper



Graphite

